

Wet Prime Centrifugal

GS3087L75-H0

PERFORMANCE

Wet prime centrifugal pump

Bare shaft, frame mounted, self-priming, heavy-duty, solids handling pump

Size	3" x 3" 76 x 76 mm
Flow, Max	490 usgpm 111 m ³ /h 30 l/s
Head, Max	140 feet 42 meters
Flow at BEP	415 usgpm 94 m ³ /h 26 l/s
Efficiency at BEP	47%
Solids Handling, Max	2.5" 63.5 mm
Operating Speed, Max	2150 rpm
Suction Connection	3" (76 mm)
Delivery Connection	3" (76 mm)
Bearing Lubrication	Oil STD Grease optional
Fasteners	Imperial

**With trimmed impeller*

APPLICATIONS

Industrial	Food Processing
Municipal	Wastewater
Construction	Mining
Oil Field	Petrochemical
Agriculture	

Heavy-duty, self-priming pump

Designed for handling solids and clear liquids, the Pioneer GS Series is the next generation of self-priming pumps. This lineup of pumps offer superior performance, increased reliability, and additional ease-of-maintenance features.

FEATURES

Rotating Assembly	Utilizes a double-lip seal with atmospheric drain for additional bearing protection
Cover Plate	Removable with convenient grip handle for ease of maintenance
Mechanical Seal	Cartridge-type, oil-lubricated tungsten titanium carbide for simple installation and ease of maintenance
Shaft	ANSI 4140 alloy steel; corrosion-resistant, easy to maintain, and highly reliable
Volute	Standard, heavy-wall for durability and peace of mind
O-rings	Nitrile and FKM for use in a wide range of applications
Available Alloys	316 and CD4Mcu stainless steels

OTHER SPECIFICATIONS

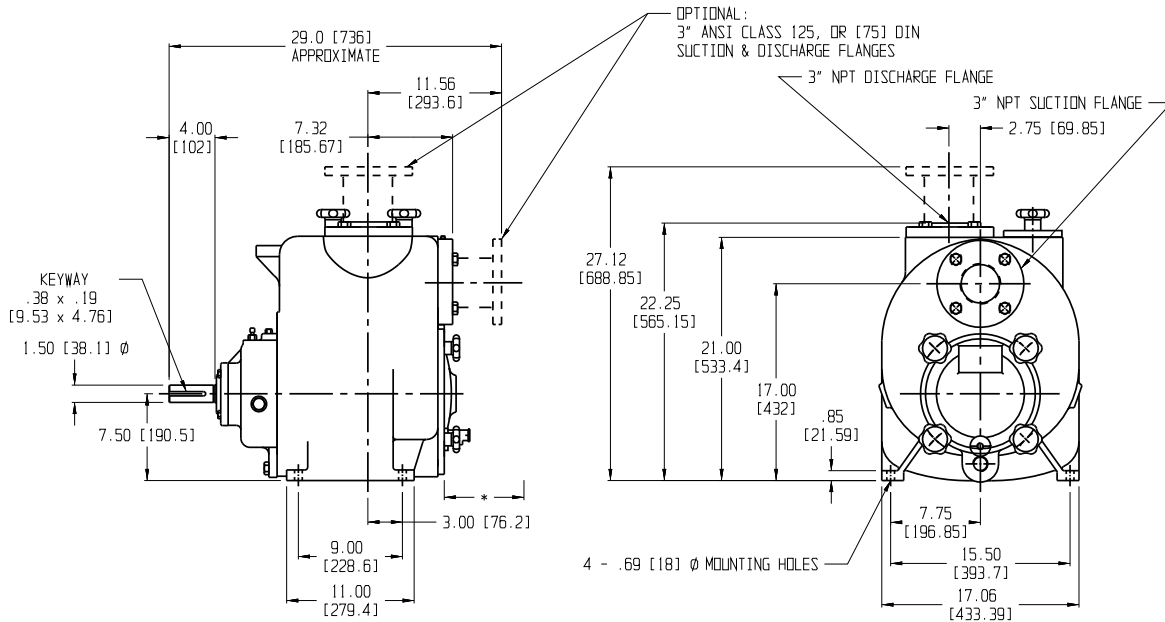
Gray Iron	CD4Mcu	Diesel Driven
316 SS	Electric Driven	Natural Gas Engine

DRIVE OPTIONS

Bareshaft Pump End	Electric Driven Trailer	Electric Direct Drive w/ Guard
Overhead Belt Drive	Diesel Driven Trailer	



MECHANICAL DIMENSIONS



PERFORMANCE CURVE

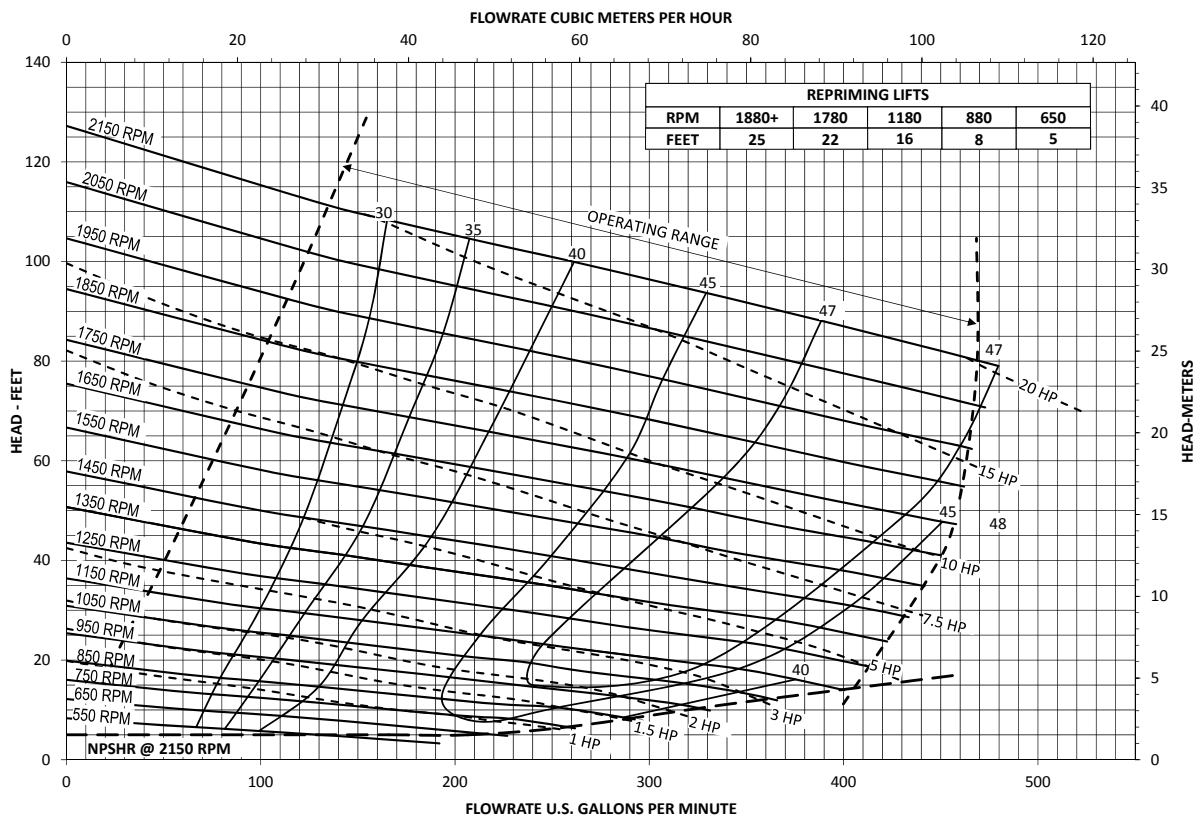
Model: GS3/P3B0875

Impeller Dia: 8.75"

Speed: Variable

Solids Size: 2.5"

Curve #GS3-VS



Wet Prime Centrifugal

GS4097L75-H0

PERFORMANCE

Wet prime centrifugal pump

Bare shaft, frame mounted, self-priming, heavy-duty, solids handling pump

Size	4" x 4" 101 x 101 mm
Flow, Max	800 usgpm 181 m ³ /h 50 l/s
Head, Max	112 feet 34 meters
Flow at BEP	630 usgpm 143 m ³ /h 39 l/s
Efficiency at BEP	47%
Solids Handling, Max	3" 76 mm
Operating Speed, Max	1950 rpm
Suction Connection	4" (101 mm)
Delivery Connection	4" (101 mm)
Bearing Lubrication	Oil STD Grease optional
Fasteners	Imperial

**With trimmed impeller*

APPLICATIONS

Industrial	Food Processing
Municipal	Wastewater
Construction	Mining
Oil Field	Petrochemical
Agriculture	



Heavy-duty, self-priming pump

Designed for handling solids and clear liquids, the Pioneer GS Series is the next generation of self-priming pumps. This lineup of pumps offer superior performance, increased reliability, and additional ease-of-maintenance features.

FEATURES

Rotating Assembly	Utilizes a double-lip seal with atmospheric drain for additional bearing protection
Cover Plate	Removable with convenient grip handle for ease of maintenance
Mechanical Seal	Cartridge-type, oil-lubricated tungsten titanium carbide for simple installation and ease of maintenance
Shaft	ANSI 4140 alloy steel; corrosion-resistant, easy to maintain, and highly reliable
Volute	Standard, heavy-wall for durability and peace of mind
O-rings	Nitrile and FKM for use in a wide range of applications
Available Alloys	316 and CD4Mcu stainless steels

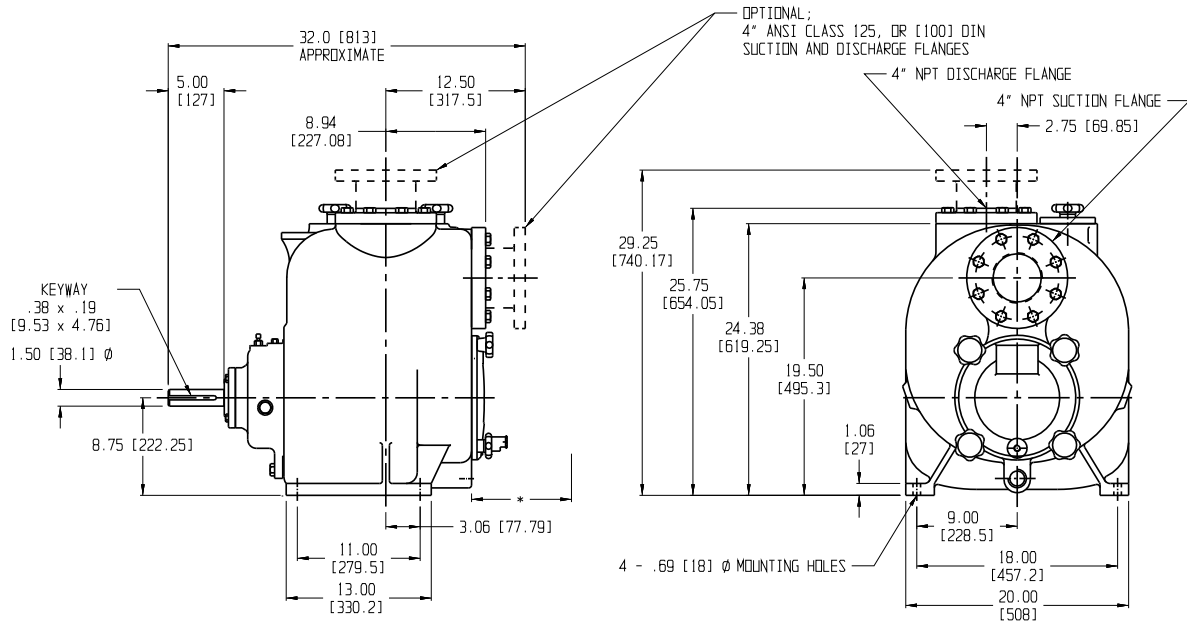
OTHER SPECIFICATIONS

Gray Iron	CD4Mcu	Diesel Driven
316 SS	Electric Driven	Natural Gas Engine

DRIVE OPTIONS

Bareshaft Pump End	Electric Driven Trailer	Electric Direct Drive w/ Guard
Overhead Belt Drive	Diesel Driven Trailer	

MECHANICAL DIMENSIONS



PERFORMANCE CURVE

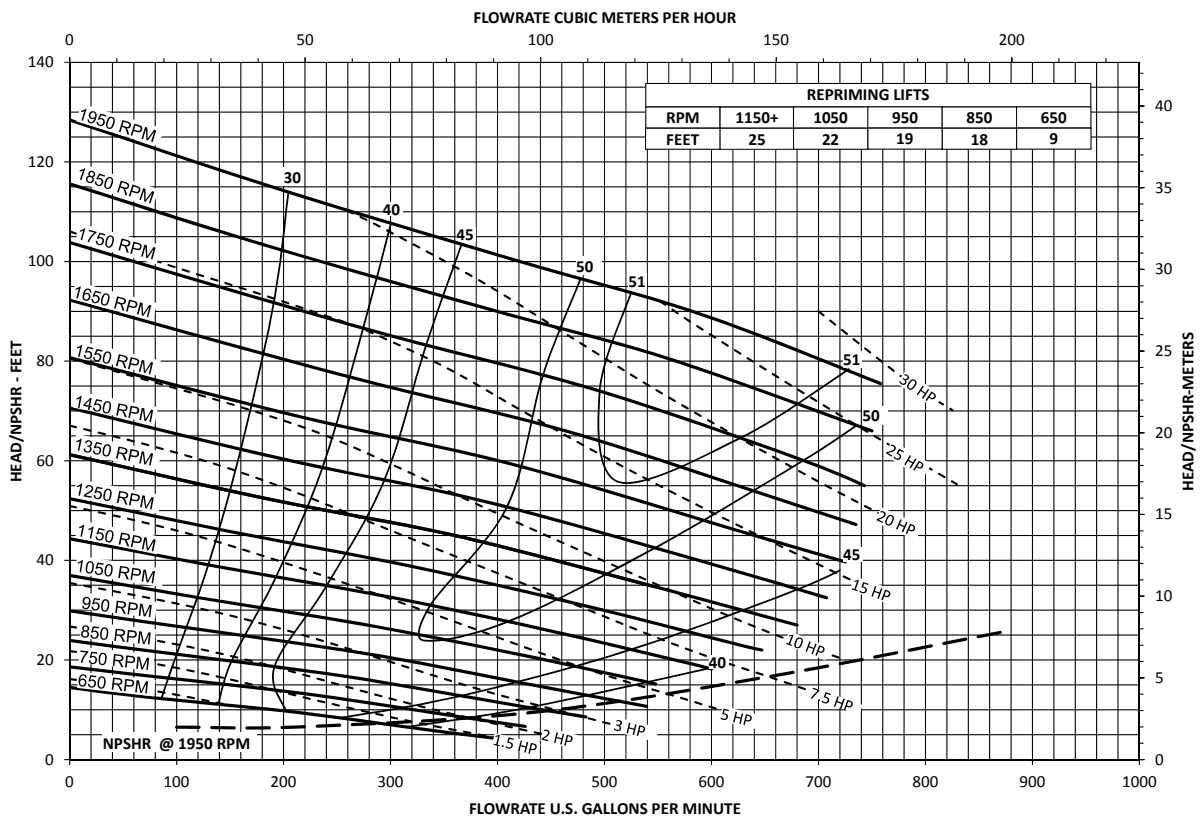
Model: GS40975

Impeller Dia: 9.75"

Speed: Variable

Solids Size: 3"

Curve #GS40975-VS



Wet Prime Centrifugal

GS6012L75-H0

PERFORMANCE

Wet prime centrifugal pump

Bare shaft, frame mounted, self-priming, heavy-duty, solids handling pump

Size	6" x 6" 152 x 152 mm
Flow, Max	1500 usgpm 340 m ³ /h 94 l/s
Head, Max	115 feet 35 meters
Flow at BEP	1075 usgpm 244 m ³ /h 67 l/s
Efficiency at BEP	47%
Solids Handling, Max	3" 76 mm
Operating Speed, Max*	1750 rpm
Suction Connection	6" (152 mm)
Delivery Connection	6" (152 mm)
Bearing Lubrication	Oil STD Grease optional
Fasteners	Imperial

*With trimmed impeller

APPLICATIONS

Industrial	Food Processing
Municipal	Wastewater
Construction	Mining
Oil Field	Petrochemical
Agriculture	



Heavy-duty, self-priming pump

Designed for handling solids and clear liquids, the Pioneer GS Series is the next generation of self-priming pumps. This lineup of pumps offer superior performance, increased reliability, and additional ease-of-maintenance features.

FEATURES

Rotating Assembly	Utilizes a double-lip seal with atmospheric drain for additional bearing protection
Cover Plate	Removable with convenient grip handle for ease of maintenance
Mechanical Seal	Cartridge-type, oil-lubricated tungsten titanium carbide for simple installation and ease of maintenance
Shaft	AISI 4140 alloy steel; corrosion-resistant, easy to maintain, and highly reliable
Volute	Standard, heavy-wall for durability and peace of mind
O-rings	Nitrile and FKM for use in a wide range of applications
Available Alloys	316 and CD4Mcu stainless steels

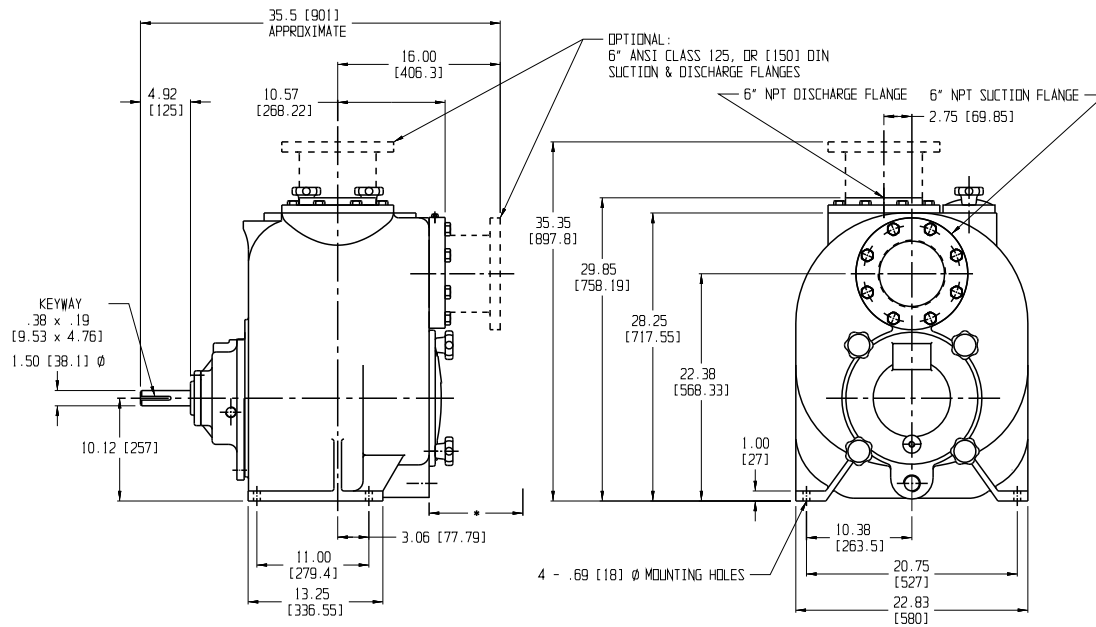
OTHER SPECIFICATIONS

Gray Iron	CD4Mcu	Diesel Driven
316 SS	Electric Driven	Natural Gas Engine

DRIVE OPTIONS

Bareshaft Pump End	Electric Driven Trailer	Electric Direct Drive w/ Guard
Overhead Belt Drive	Diesel Driven Trailer	

MECHANICAL DIMENSIONS



PERFORMANCE CURVE

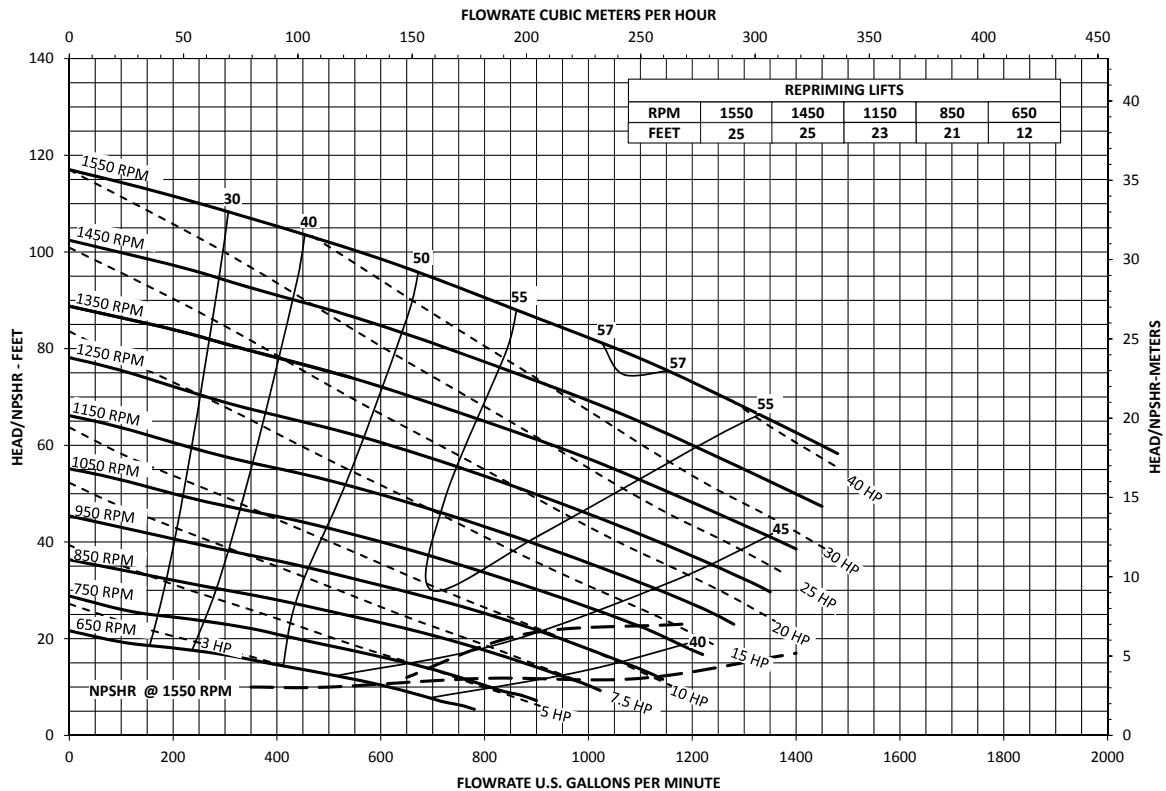
Model: GS6012/P6B012

Impeller Dia: 12.38"

Speed: Variable

Solids Size: 3"

Curve #GS6012-VS





Wet Prime Centrifugal

GS8015L75-H0

PERFORMANCE

Wet prime centrifugal pump

Bare shaft, frame mounted, self-priming, heavy-duty, solids handling pump

Size	8" x 8" 203 x 203 mm
Flow, Max	2500 usgpm 567 m³/h 157 l/s
Head, Max	130 feet 39 meters
Flow at BEP	1572 usgpm 357 m³/h 99 l/s
Efficiency at BEP	59%
Solids Handling, Max	3" 76 mm
Operating Speed, Max*	1550 rpm
Suction Connection	8" (203 mm)
Delivery Connection	8" (203 mm)
Bearing Lubrication	Oil STD Grease optional
Fasteners	Imperial

**With trimmed impeller*

APPLICATIONS

Industrial	Food Processing
Municipal	Wastewater
Construction	Mining
Oil Field	Petrochemical
Agriculture	



Heavy-duty, self-priming pump

Designed for handling solids and clear liquids, the Pioneer GS Series is the next generation of self-priming pumps. This lineup of pumps offer superior performance, increased reliability, and additional ease-of-maintenance features.

FEATURES

Rotating Assembly	Utilizes a double-lip seal with atmospheric drain for additional bearing protection
Cover Plate	Removable with convenient grip handle for ease of maintenance
Mechanical Seal	Cartridge-type, oil-lubricated 316 SS/carbide for simple installation and ease of maintenance
Shaft	AISI 4140 alloy steel; corrosion-resistant, easy to maintain, and highly reliable
Volute	Standard, heavy-wall for durability and peace of mind
O-rings	Nitrile and FKM for use in a wide range of applications
Available Alloys	316 and CD4Mcu stainless steels

DRIVE OPTIONS

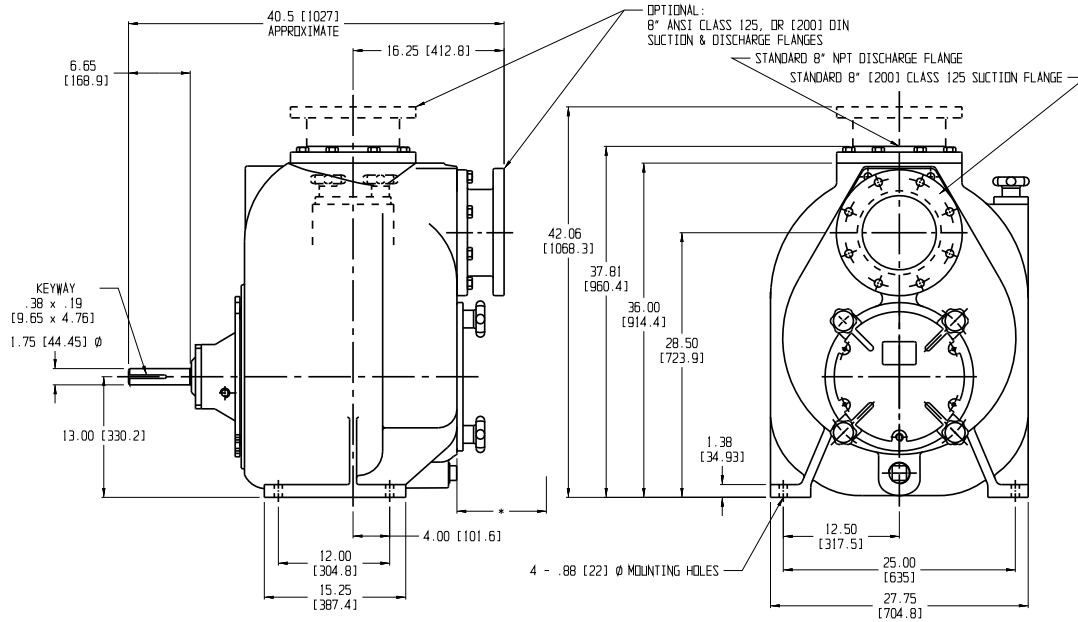
Bareshaft Pump End	Electric Driven Trailer	Electric Direct Drive w/Guard
Overhead Belt Drive	Diesel Driven Trailer	

STANDARD MATERIALS OF CONSTRUCTION

Impeller	Ductile Iron
Volute	Cast Iron
Wear Plate	Stainless Steel
Seal Plate	Cast Iron
Cover Plate	Cast Iron

**Contact the factory for other material options*

MECHANICAL DIMENSIONS



PERFORMANCE CURVE

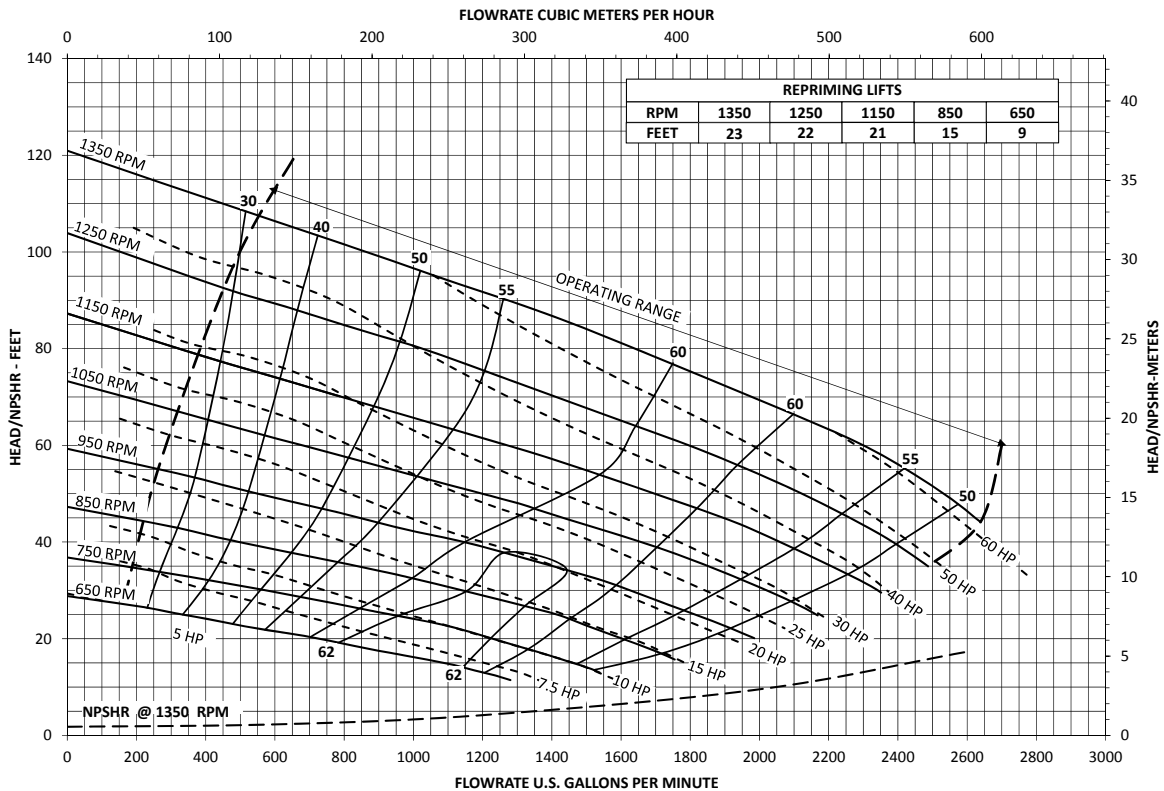
Model: GS8/P8B015

Impeller Dia: 14.75"

Speed: Variable

Solids Size: 3"

Curve #GS8-VS



Wet Prime Centrifugal

GS10014L75-H0

PERFORMANCE

Wet prime centrifugal pump

Bare shaft, frame mounted, self-priming, heavy-duty, solids handling pump

Size	10" x 10" 254 x 254 mm
Flow, Max	3450 usgpm 783 m ³ /h 217 l/s
Head, Max	175 feet 53 meters
Flow at BEP	2840 usgpm 645 m ³ /h 179 l/s
Efficiency at BEP	76%
Solids Handling, Max	3" 76 mm
Operating Speed, Max	1750 rpm
Suction Connection	10" (254 mm)
Delivery Connection	10" (254 mm)
Bearing Lubrication	Oil STD Grease optional
Fasteners	Imperial

**With trimmed impeller*

APPLICATIONS

Industrial	Food Processing
Municipal	Wastewater
Construction	Mining
Oil Field	Petrochemical
Agriculture	



Heavy-duty, self-priming pump

Designed for handling solids and clear liquids, the Pioneer GS Series is the next generation of self-priming pumps. This lineup of pumps offer superior performance, increased reliability, and additional ease-of-maintenance features.

FEATURES

Rotating Assembly	Utilizes a double-lip seal with atmospheric drain for additional bearing protection
Cover Plate	Removable with convenient grip handle for ease of maintenance
Mechanical Seal	Cartridge-type, oil-lubricated tungsten titanium carbide for simple installation and ease of maintenance
Shaft	AISI 4140 alloy steel; corrosion-resistant, easy to maintain, and highly reliable
Volute	Standard, heavy-wall for durability and peace of mind
O-rings	Nitrile and FKM for use in a wide range of applications
Available Alloys	316 and CD4Mcu stainless steels

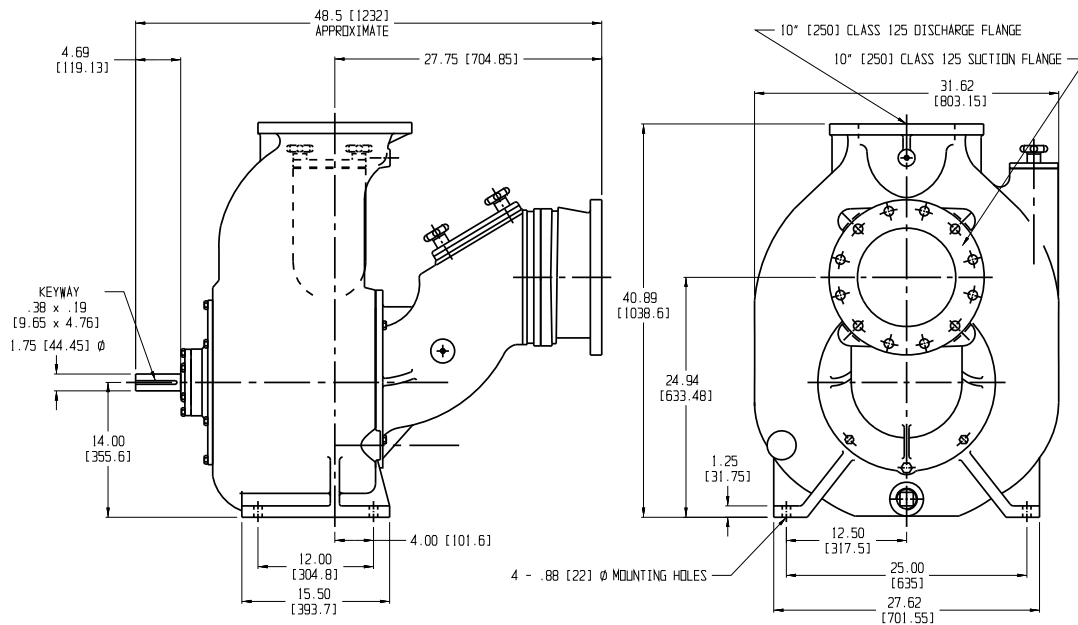
OTHER SPECIFICATIONS

Gray Iron	CD4Mcu	Diesel Driven
316 SS	Electric Driven	Natural Gas Engine

DRIVE OPTIONS

Bareshaft Pump End	Electric Driven Trailer	Electric Direct Drive w/ Guard
Overhead Belt Drive	Diesel Driven Trailer	

MECHANICAL DIMENSIONS



PERFORMANCE CURVE

Model: GS10/P10B015

Impeller Dia: 14.75"

Speed: Variable

Solids Size: 3"

Curve #GS10-VS

